

IPv6 Deployment in Enterprise Networks

Ivan Pepelnjak

Chief Technology Advisor, NIL Data Communications



**Podatkovne komunikacije
Data Communications**



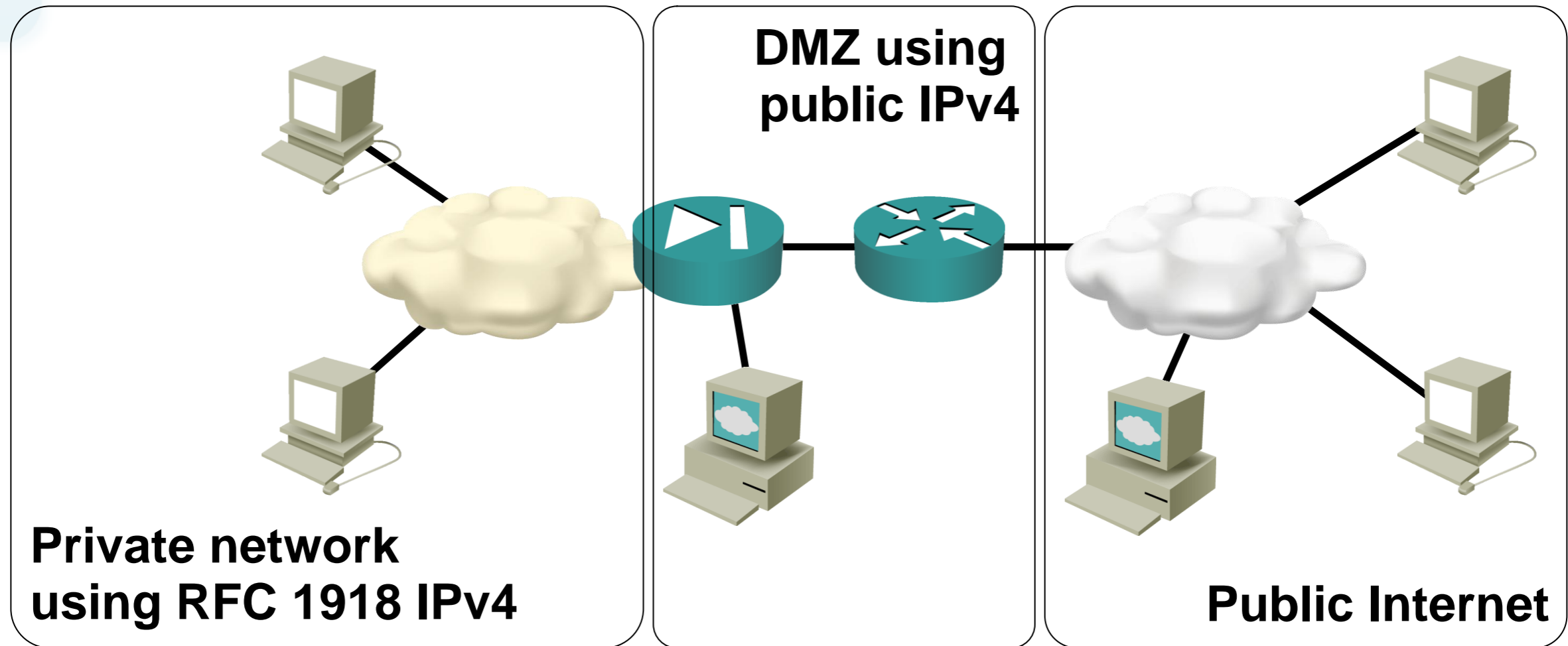
NIL Assist



NIL Non-Stop



Scenario



- **Do I care about IPv6?**
- **Where shall I focus my efforts?**

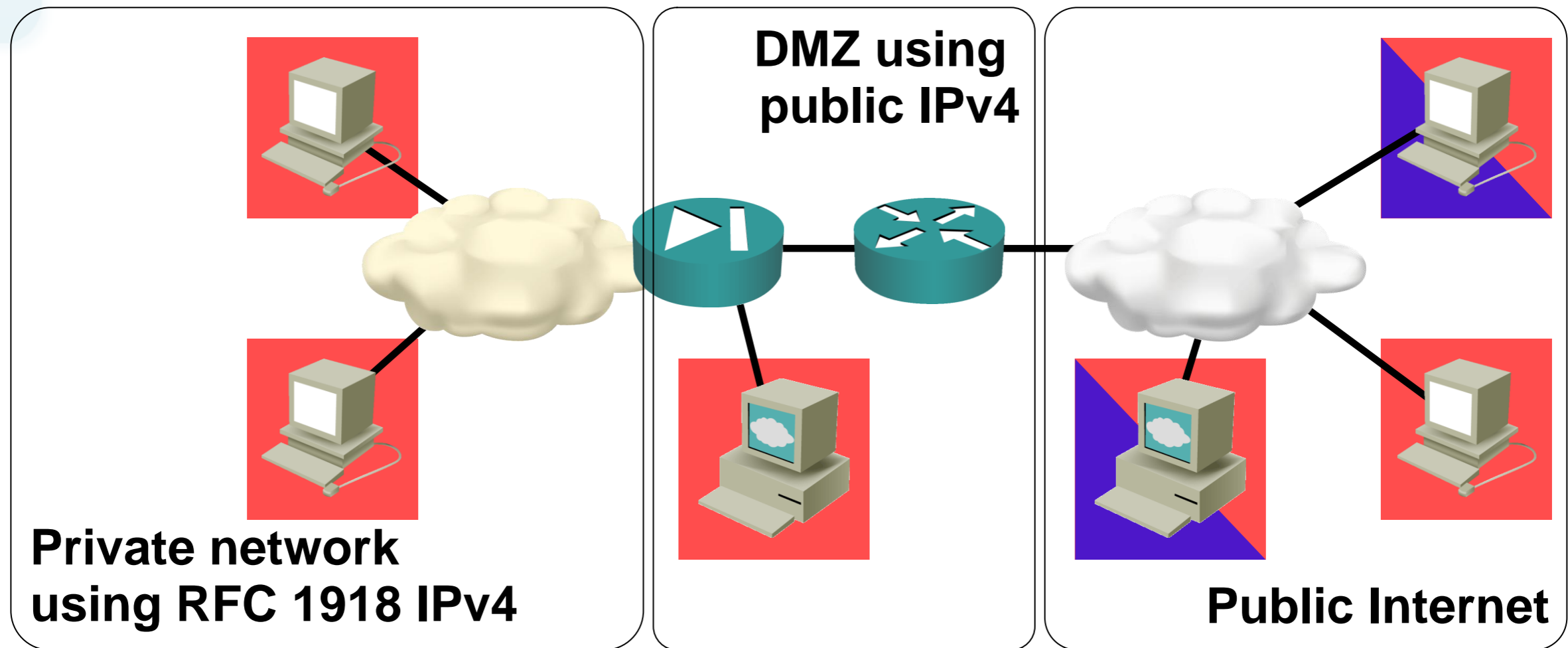
Facts of Life

- **IPv6 is here, get used to it.**
- **You'll get stuck on migration details.**
- **Start small, but start now.**

Facts of Life (NAT)

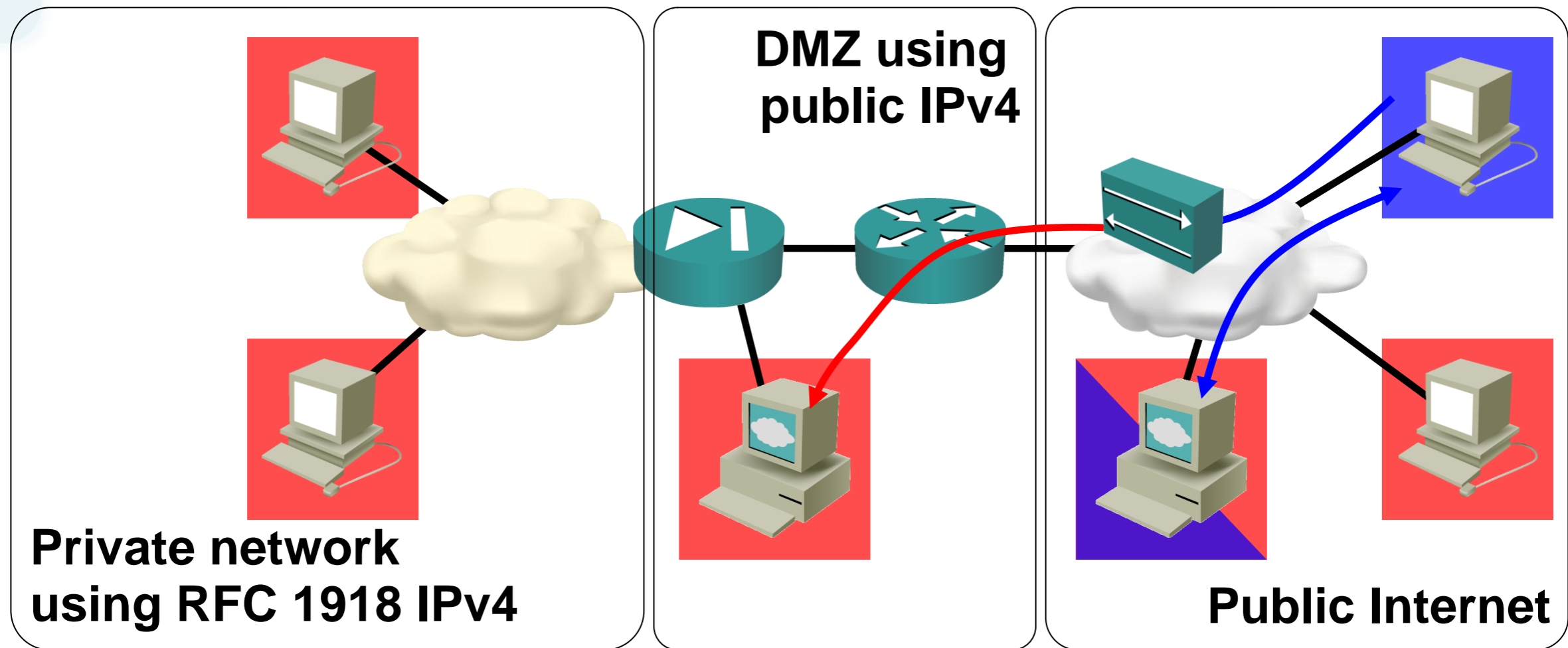
- **Everyone uses 4-to-4 NAT. It's bad.**
- **Slow migration to IPv6 requires more NAT.**
- **6-to-4 NAT stinks.**
- **4-to-6 NAT is horrendous.**

Deployment Phase 1: Dual-stack



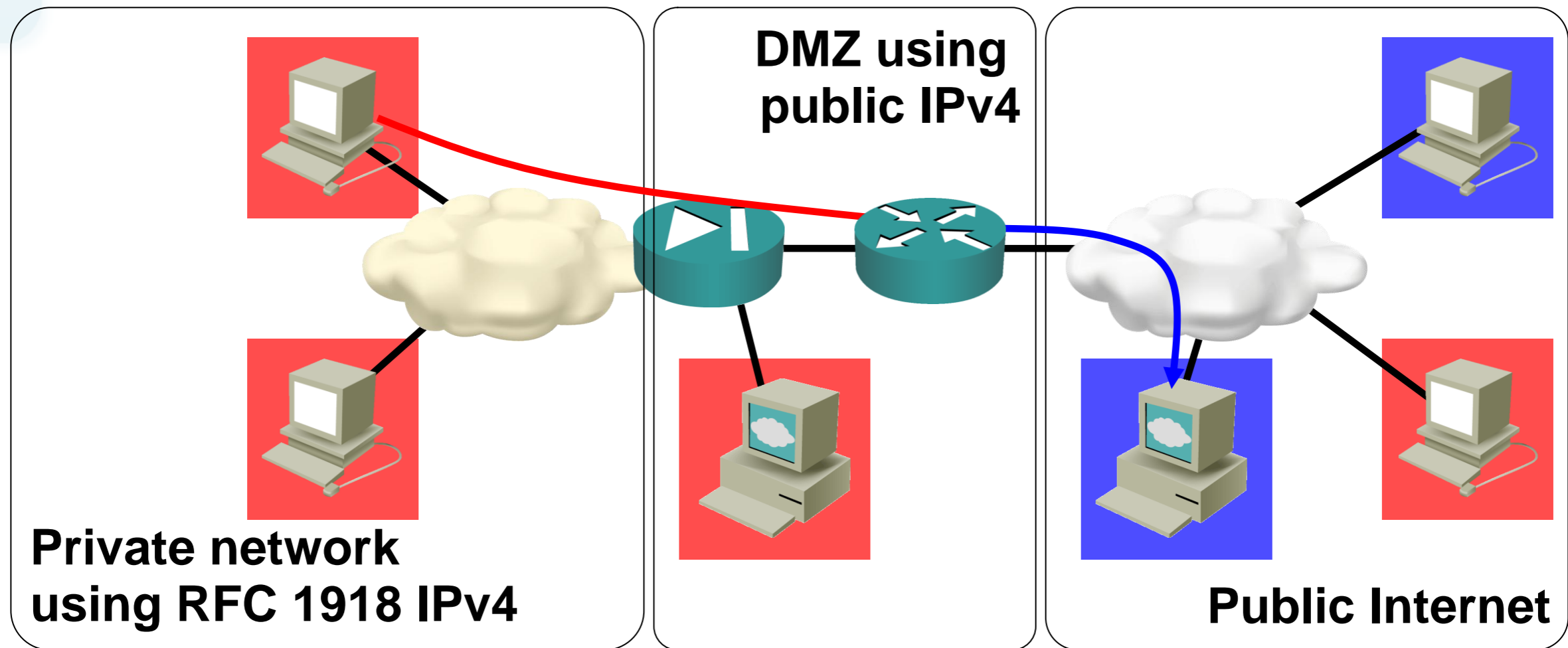
- **Some public servers are reachable over IPv6**

Deployment Phase 2: IPv6 Clients



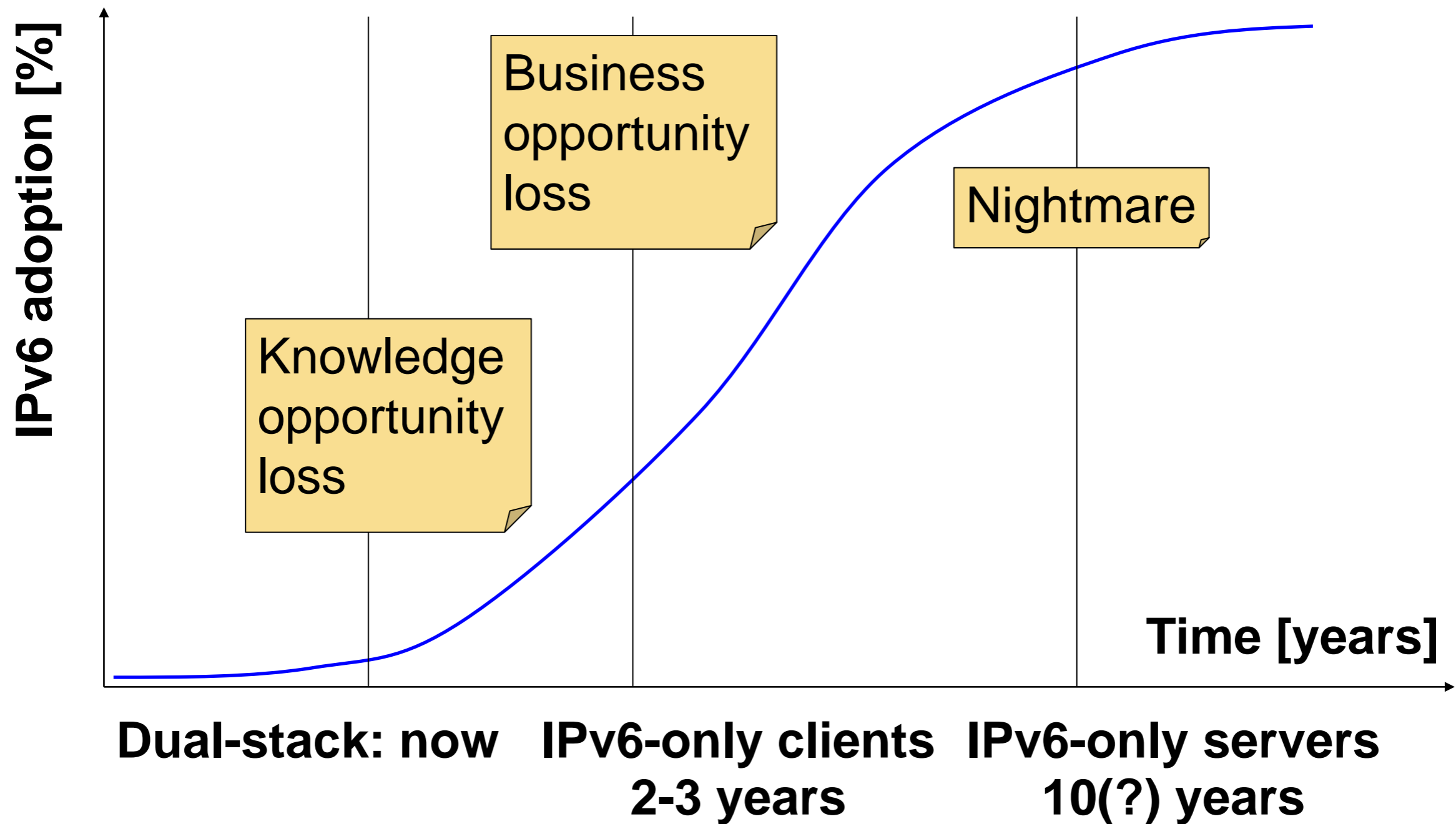
- **Some clients are using only IPv6: 6-to-4 NAT**

Deployment Phase 3: IPv6 Servers

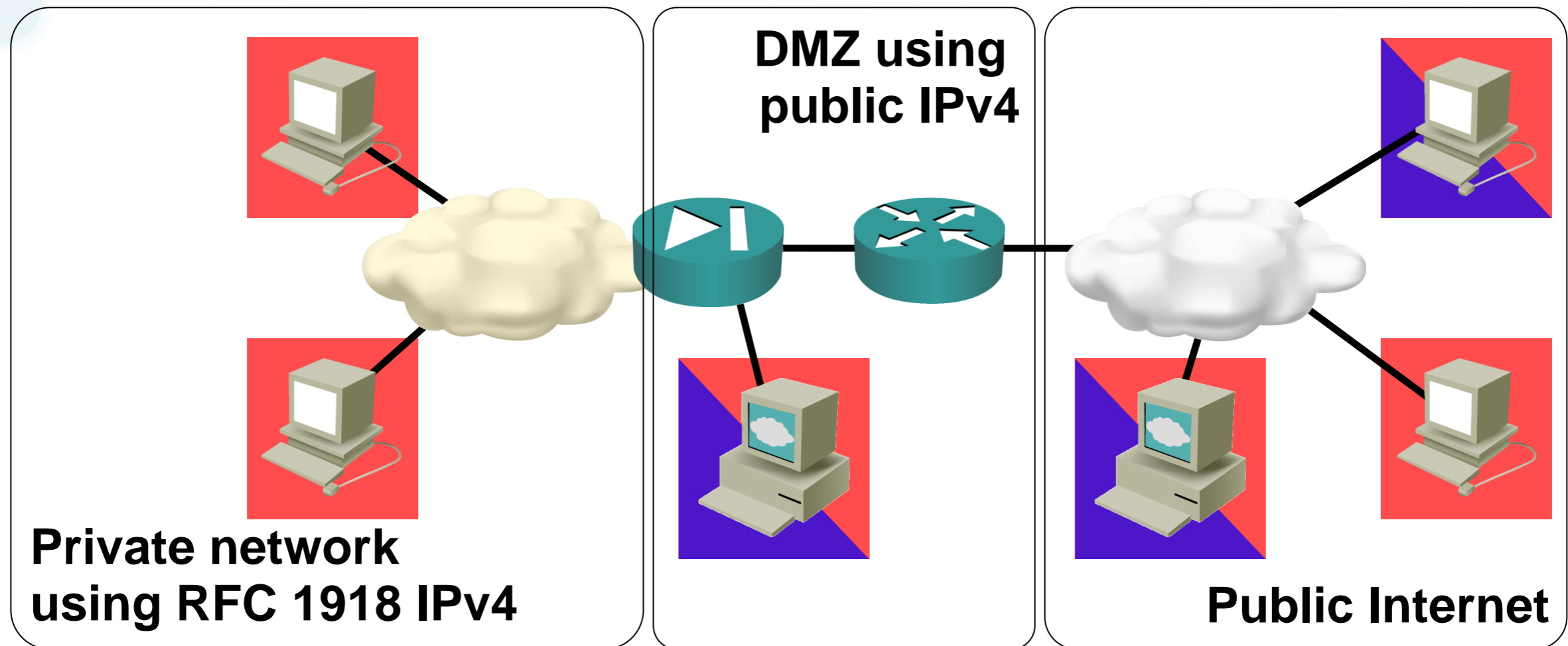


- **Some servers are reachable only over IPv6:
4-to-6 NAT**

Timeline Guestimate



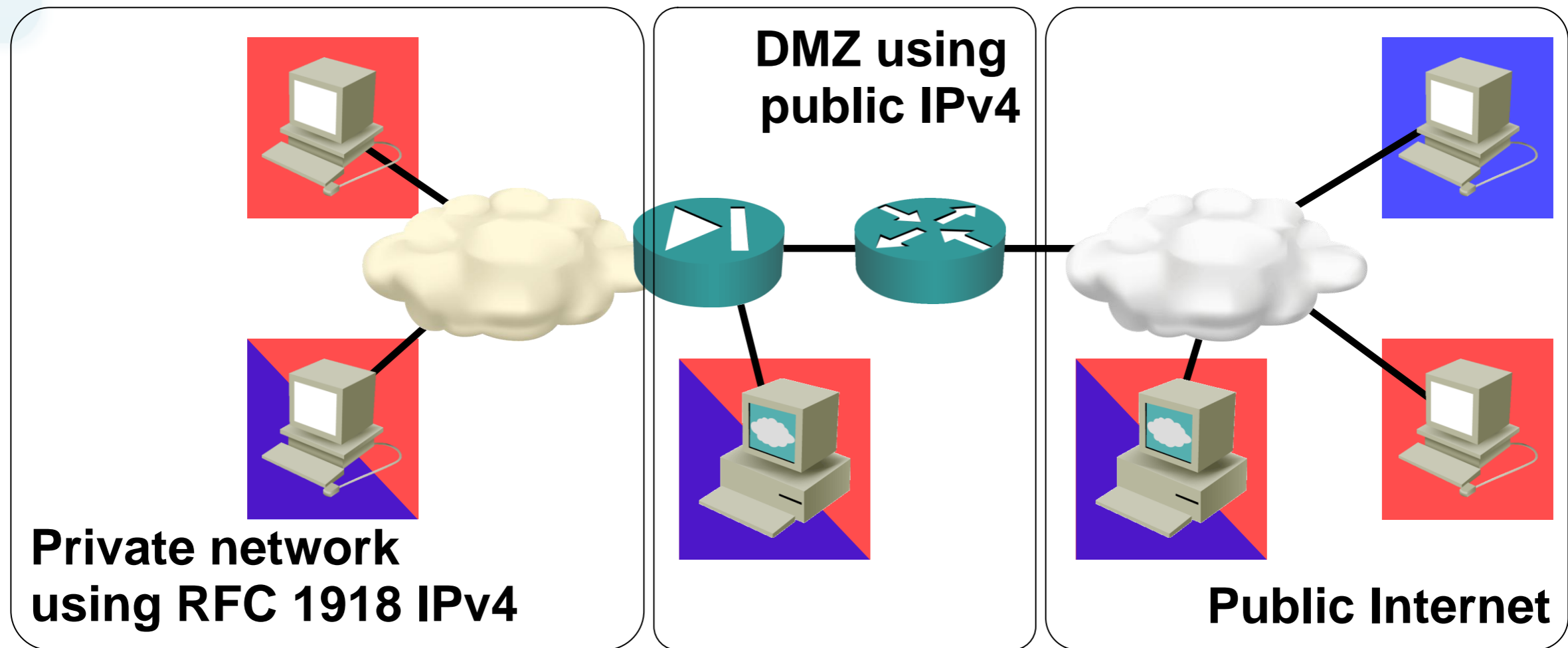
Phase 1 Actions



Ignore IPv6 or ...

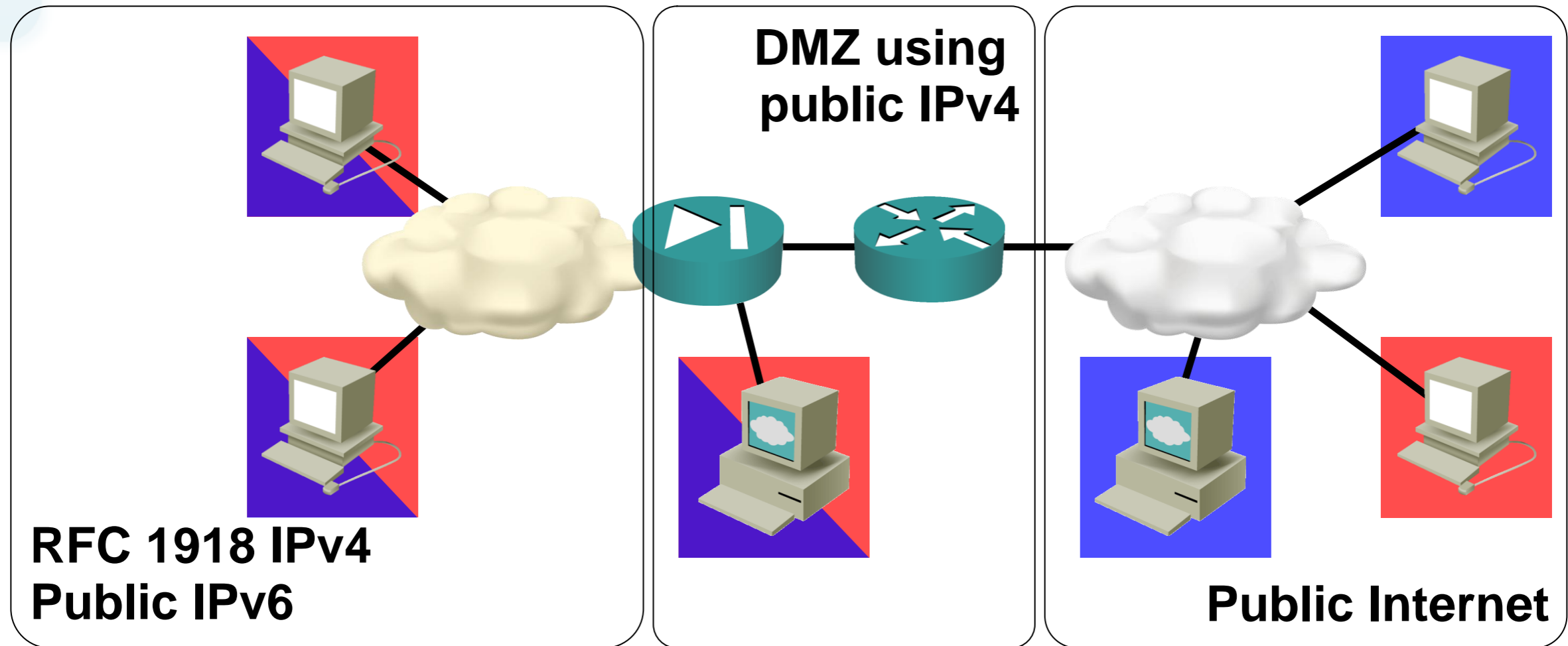
- **Deploy IPv6 in your DMZ infrastructure**
- **Dual-stack on non-critical servers**

Phase 2 Actions



- **You are IPv6 ready in your DMZ (are you?)**
- **Design, test and deploy dual stack in your network**

Phase 3 Actions



- ? Relax and enjoy**
- ? Frantic catch-up efforts**
- ? Suffer the consequences of 4-to-6 NAT**

Summary

- **IPv6 is here**
- **There's no rush (yet)**
- **Use your time wisely**